

# CAPRA® 8000SS

## HIGH SPEED SIDE SEAL HORIZONTAL SHRINK WRAPPER

ARPAC's CAPRA® 8000SS side seal horizontal shrink wrapper ensures maximum performance at speeds up to 140 packages per minute or 140 linear feet of film per minute.

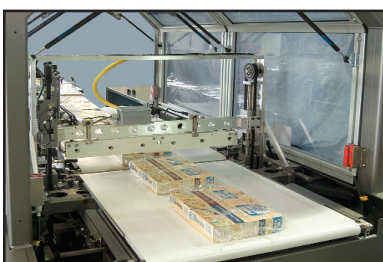
Ideal for full film over-wrapped packages for retail display, the CAPRA® 8000SS shrink wraps small and large product sizes, from pharmaceuticals to construction materials. This flexible shrink wrapper has a 24" wide seal bar and a 10" high seal bar opening that can be configured to run vertical end seals for tall packages.

Tool-less changeovers are fast and simple with ARPAC's unique film forming and delivery system. A proven "no contact" easy to maintain side seal runs polyethylene, polyolefin and PVC films without changeover. This machine runs single-wound shrink film, which is less costly than center-folded film and runs twice as long. Fast and easy film threading gets you back up and running in minutes. The operator-friendly ergonomic design conveniently locates all operator controls, film loading, and changeover functions on the same side of the machine.



A unique film folding mechanism uses narrower film for maximum return on investment. Flat film is fed up from a roll beneath the film inverter and the film path ensures equal transfer of grouped products onto the film without skewing the product configuration. This is ideal for multipacks and irregular shaped products.

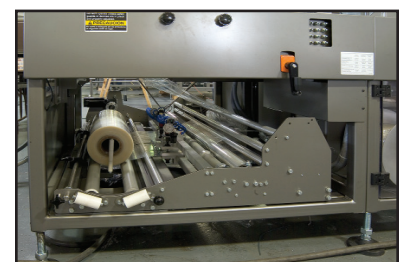
A variety of standard "Quick-Connect" infeed conveyors are in stock to handle a wide range of products and are easily interchangeable.



High Speeds Up To 140 Feet Per Minute



Optional Operator Controls Can Be Reached From Both Sides of Machine



Low Height Slide Out Film Rack for Easy Film Loading

## FEATURES

- Heavy-duty rugged construction designed for high durability and around-the-clock operation
- Servo driven seal carriage and seal head
- 24" wide seal bar, with 10" seal opening
- Horizontal/vertical sealing capability
- Standard 6' flighted infeed conveyor
- Dial indicators on all manual adjustments
- Guards and control box doors are electrically interlocked
- Allen-Bradley® CompactLogix PLC
- Allen-Bradley® PanelView touchscreen interface, message display, package calculators and self-diagnostics
- Programmable recipes for a variety of product sizes
- NEMA 12 electrical cabinet and controls
- Low film alert warns that a film changeover will soon be necessary
- Central point lubrication simplifies preventive maintenance

## OPTIONS

- Stainless-steel construction
- Band sealer for PVC and new generation high strength polyolefins
- Casters for machine portability
- Film cart
- UL / CSA approved electrical cabinet
- Swivel mounted control panel provides access from both sides
- Stack light and horn
- Film print registration
- Low product detection
- Hole punch
- Shrink tunnel
- Customized infeeds
- Available with variety of infeeds including:
  - lug infeeds in 6', 10', 15', 20' lengths
  - dual pacing belt infeed
  - flight bar infeeds in 10' and 20' lengths

## SPECIFICATIONS

### Speed

- Up to 140 packages per minute, up to 140 feet per minute

### Power Requirements

- Electrical: 460VAC, 3Ph, 60Hz, 44A  
Other voltages available on request
- Compressed air may be required for certain options

### Product Range\*

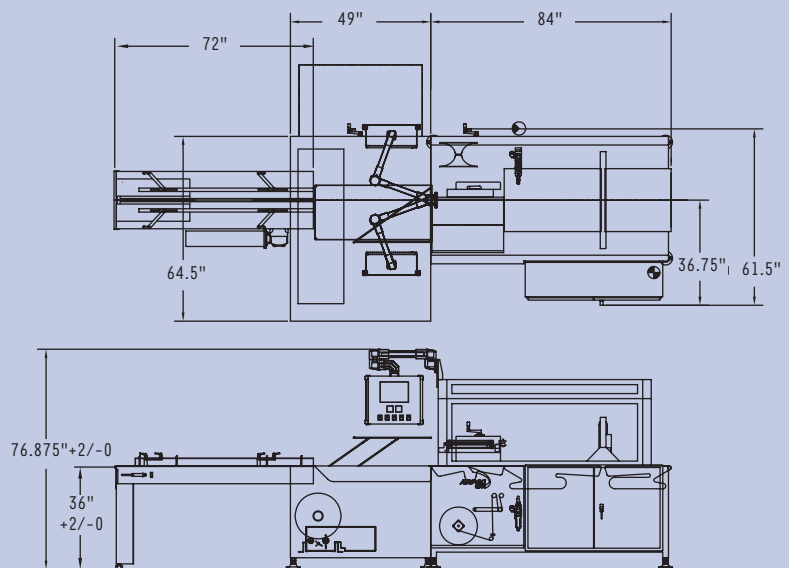
- Width: 2" to 22"
  - Length: 5" to infinite
  - Height: 1/4" to 10"
- \* Package maximums cannot occur together.

### Film

- Max. film width: 50" single-wound
- Film type: polyolefin, polyethylene, PVC and PLA
- Clear or printed

## APPLICATIONS

- |             |                   |                  |
|-------------|-------------------|------------------|
| • Plates    | • Light bulbs     | • Paper products |
| • Mailers   | • Oil filters     | • Boxes          |
| • Cosmetics | • Pharmaceuticals | • Trays          |
| • Games     | • Software        | • Multipacks     |
| • Hardware  | • CDs/DVD's       |                  |



# PACKAGING

888-922-1622

WWW.IPACK.COM